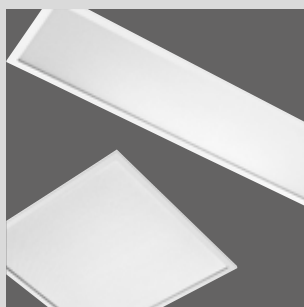




Astrid full panel LED **GEWISS**

With recessed, **ceiling** and **suspended lighting** options, **Astrid full panel LED** luminaires are designed for the commercial sector. They comply with **EN12464-1** and are available as **stand alone** and **DALI** versions.

The exclusive advantages of **Astrid Full Panel LED**



Ultra-compact design

An elegant range of LED panels with an extremely slim profile of just 5mm, for offices and commercial spaces.



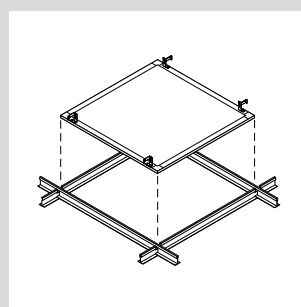
Versatile

Designed for new and renovated buildings, with lighting performance to replace traditional 4x 18W recessed luminaires.



Microprismatic PMMA shield

An excellent lighting solution for work areas needing a high level of visual comfort, provided by a microprismatic shield for high glare control UGR <19.



Easy assembly

Thanks to its ergonomic design, installing Astrid full panel LED is very simple, intuitive and fast. Optional installation accessories are available.

Project type:

Lighting for 30m² office with presence and brightness sensor.

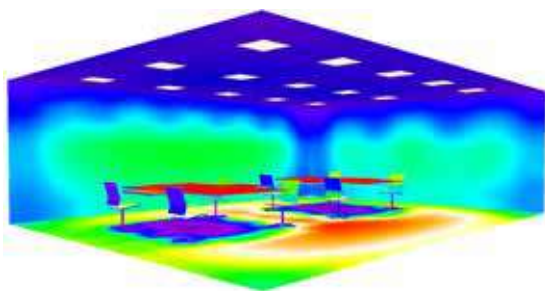


6 ASTRID FULL PANEL
GWS2907D (DALI)

Presence and brightness
PIR sensor



Installation:



Benefits:

- Meets the Thermal Regulation requirements
- Compliance with lighting standards: Work area with screen >500 lux
- Visual comfort: Excellent uniformity of 0.8 and UGR <19 over the whole area
- Energy saving: -75% compared to a T5 on / off solution

Discover the full **Astrid Full Panel** range on www.gewiss.com

Range

	Code	Colour temp. (K)	Power (W)	Lumen Output (lm)	TA (°C) *	Efficiency (lm/W)	Weight (kg)	Dimensions
Stand Alone	GWS2901S	3000	26	2650	-25 to +40	102	3,1	600x600 mm
	GWS2906S	4000		2790		107		
	GWS2902S	3000	36	3760		104		
	GWS2907S	4000		3960		110	3,4	300x1200 mm
	GWS2921S	3000	40	3450		86		
	GWS2922S	4000		3630		91		
DALI	GWS2901D	3000	26	2650		98	3,1	600x600 mm
	GWS2906D	4000		2790		103		
	GWS2902D	3000	36	3760		102		
	GWS2907D	4000		3960		110	3,4	300x1200 mm
	GWS2921D	3000	40	3450		86		
	GWS2922D	4000		3630		91		

* TA max advised to provide and guarantee the declared performance

Accessory

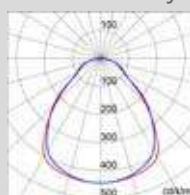
Code	Description	Dimensions
GWS2992	Emergency kit 3h	
GWS2993	4 clip kit for recessed (false ceiling) installations	
GWS2994	Surface mounting box kit 60X60	598x50 mm
GWS2998	Surface mounting box kit 30X120	1198x50 mm
GWS2995	Surface mounting kit 4C Ceiling	
GWS2996	Suspension 4 cables kit	

Technical features

- UGR <19
- 50000h (L70B30)
- up to 110 lm/W
- 2 flux equivalent to T5 3x14W, T5 4x14W
- 40% energy saving compared to T5 solutions



Photometry



Dimensions

