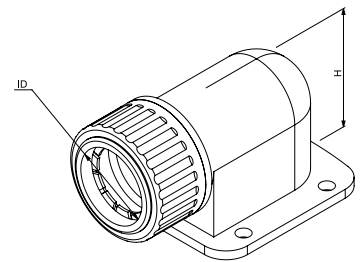


# Data sheet

<b>ID</b>	<b>SFL SW</b>
<b>Description</b>	gland with flange, halogen-free
<b>Properties</b>	for corrugated conduits, with patented plug-in system for quick-fit assembly, pull-tight connection, with 4 fixing holes
<b>Colour</b>	black, similar to RAL 9005
<b>Fire Behaviour</b>	non flame propagating
<b>Classification</b>	22434



Norms: ÖVE/ÖNORM EN 61386-1:2009, ÖVE/ÖNORM EN 61386-23:2012

halogenfree according to EN 60754



Working temperature -25 to +105 °C	Degree of protection (IP) IP54	UV-Level L2
---------------------------------------	-----------------------------------	----------------

Art. no.	Nominal diameter	Thread connection size	Total height	Small Package	Large Package
043 005	20 mm	M20 x 1.5	35,9 mm	50 pc	400 pc
043 006	25 mm	M25 x 1.5	42 mm	25 pc	300 pc
043 007	32 mm	M32 x 1.5	50 mm	20 pc	160 pc
043 008	40 mm	M40 x 1.5	62 mm	10 pc	80 pc
032 663	50 mm	M50 x 1.5	76 mm	6 pc	48 pc
043 010	63 mm	M63 x 1.5	96 mm	3 pc	24 pc

## Areas of Recommended Application

Area	
Approved in combination with protective conduit CSA	False
Approved in combination with protective conduit UR	False
Approved in combination with protective conduit VD TÜV/GGVS	False
Approved in combination with protective conduit DIN EN 61386-23	True
Approved in combination with protective conduit Lloyd's Register	False

## Further technical details

Details	
Model	90°-elbow
Revolving thread	False
Construction type	Flange
Type of connection	Other
Thread type	Metric
Material sealing	No sealing
Material	PA-Blend

\*) L1: Indoor use - to avoid UV discoloration (no exposure to direct sunlight).

L2: Partially shaded: Outside, in areas with sun only for two to four hours a day, in shadowy places.

L3: Full sun: To be used also in areas with whole-day exposure to sunlight, e. g. roofs, antenna poles or PV panels.

Civil engineering and road construction products marked "L2" have to be laid in the shortest time possible to ensure color fastness and stability.