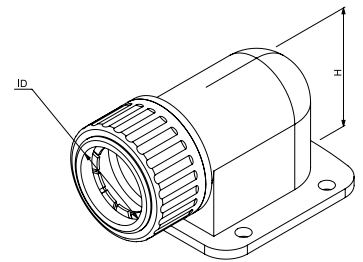


Data sheet

ID	SFL S GR
Description	gland with flange, halogen-free
Properties	for corrugated conduits, with patented plug-in system for quick-fit assembly, pull-tight connection and jetting water tight sealings, with 4 fixing holes
Colour	grey, similar to RAL 7001
Fire Behaviour	non flame propagating
Classification	22434



Norms: ÖVE/ÖNORM EN 61386-1:2009, ÖVE/ÖNORM EN 61386-23:2012
halogenfree according to EN 60754



Working temperature -25 to +105 °C	Degree of protection (IP) IP65	UV-Level L2
---------------------------------------	-----------------------------------	----------------

Art. no.	Nominal diameter	Thread connection size	Total height	Small Package	Large Package
043 013	20 mm	M20 x 1.5	35,9 mm	50 pc	400 pc
019 423	25 mm	M25 x 1.5	42 mm	25 pc	300 pc
019 422	32 mm	M32 x 1.5	50 mm	20 pc	160 pc
015 912	25 mm	M40 x 1.5	62 mm	10 pc	80 pc
015 913	50 mm	M50 x 1.5	76 mm	6 pc	48 pc
043 019	63 mm	M63 x 1.5	96 mm	3 pc	24 pc

Areas of Recommended Application

Area	
Approved in combination with protective conduit CSA	False
Approved in combination with protective conduit UR	False
Approved in combination with protective conduit VD TÜV/GGVS	False
Approved in combination with protective conduit DIN EN 61386-23	True
Approved in combination with protective conduit Lloyd's Register	False

Further technical details

Details	
Model	90°-elbow
Revolving thread	False
Construction type	Flange
Type of connection	Other
Thread type	Metric
Material sealing	TPE
Material	PA-Blend

*) L1: Indoor use - to avoid UV discoloration (no exposure to direct sunlight).
L2: Partially shaded: Outside, in areas with sun only for two to four hours a day, in shadowy places.
L3: Full sun: To be used also in areas with whole-day exposure to sunlight, e. g. roofs, antenna poles or PV panels.
Civil engineering and road construction products marked "L2" have to be laid in the shortest time possible to ensure color fastness and stability.