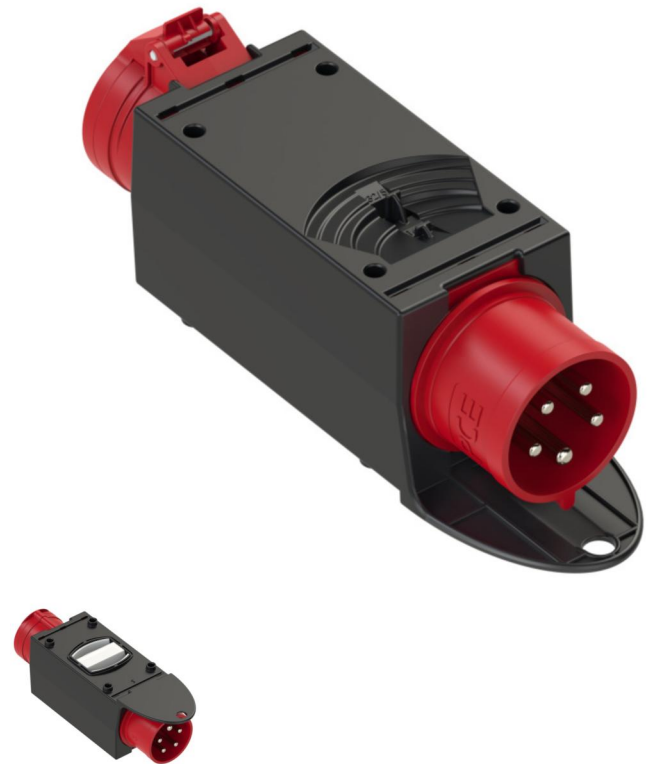


PCE data sheet

article#	9436422
article description	ST.ANTON 2F 16/5 GS32/5 Ea m.B.
description long	mobile thermoplastic distribution box - series St.Anton-2f IP44 with handle 1xCEE-plug 32A 5p 400V 1xCEE-socket 16A 5p 400V fused with 1xMCB 16A 3p C MCB made by Eaton ÖVE / VDE Distribution box is ready wired for using label: "RCD-protection has to be provided by customer side"
GTIN (EAN)	9003399229763
country of origin	AT
customs number	85366990
net weight	0.950 kg
packaging quantity	2

ETIM 7.0	EC000379
CEE socket outlet 16 A	1x16A5p400V
CEE socket outlet 32 A	
CEE socket outlet 63 A	
Number of socket outlets with protective contact	
Number of socket outlets with protective contact (SCHUKO)	
Other fixtures and/or empty locations	
Protection	Over current switch
Leakage current type	
Earth leakage switch	
Material housing	Plastic
Contact material	CuZn
Power supply/connection possibility	Built-up plug
Number of poles mains connection	5
Type of mains connection	CEE 32 A



www.manufacturer-safety.info